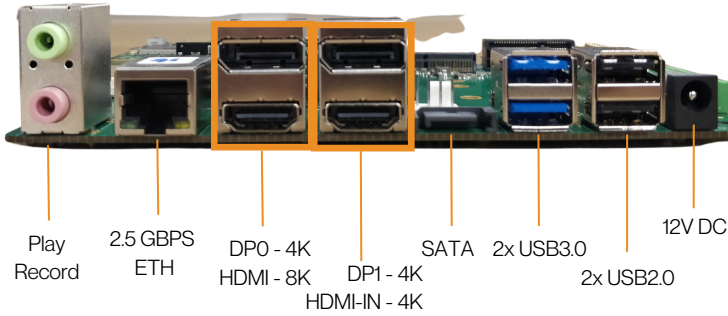
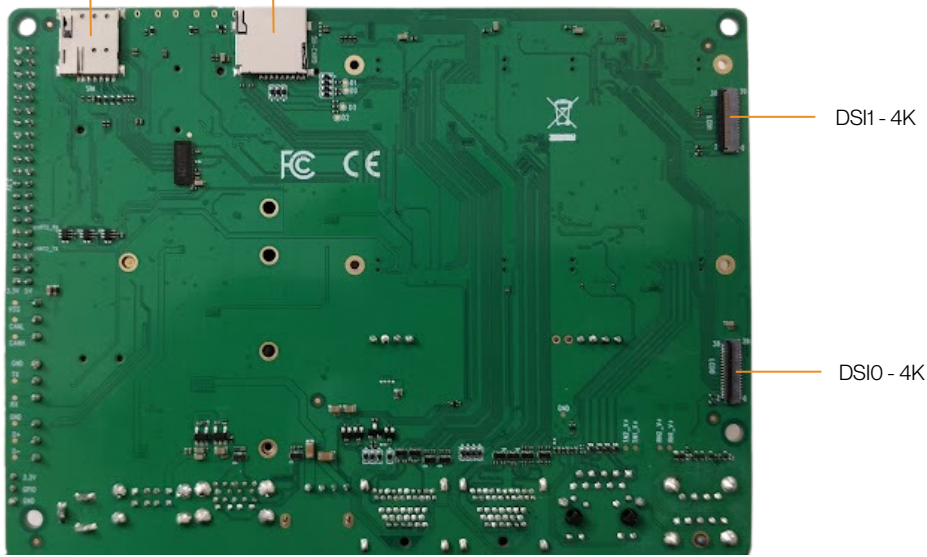
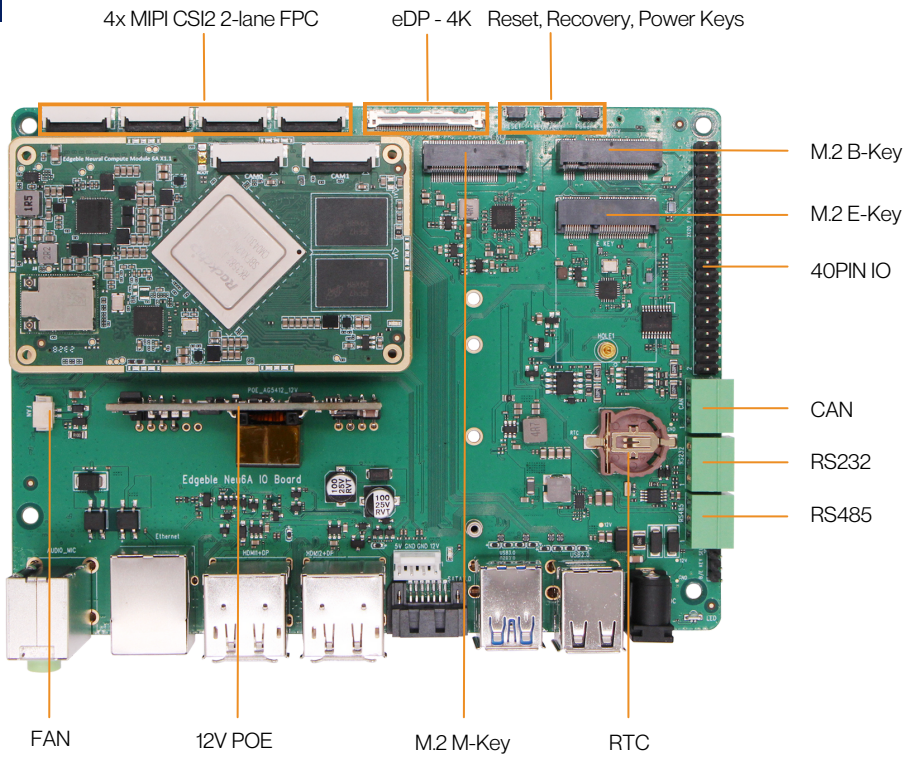


IO-NCM6B

1.6mm FR4 SBC with Edgeble NCM6A/6B Accelerator

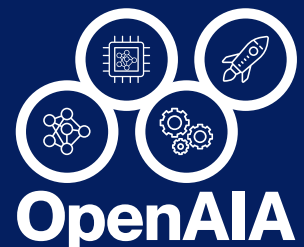


Specifications

Form factor	1.6mm FR4 Carrier PCB
Storage	1x microSD Slot 1x M.2 M key 1x SATA 3.1
Network	2x 1G ETH 1x M.2 B-Key for 4G/5G 1x M.2 E-Key for WiFi
USB	2x USB 2.0 Type-A 2x USB 3.1 Type-A & OTG
Video Out	1x HDMI Out 2x DP 2x MIPI DSI 1x eDP
Video In	1x HDMI In 4x MIPI CSI2 2-lane FPC
Audio	OUT: 1x Speaker 1x Phone 1x HDMI audio out 2x DP audio out IN: Line-In MIC HDMI audio in
I/O Interfaces	CAN RS485 RS232 Debug UART FAN Indicator LEDs 40-pin I/O expansion SIM slot RTC battery SD slot Power Key Recovery Key Reset Key
Power supply	DC 12V power supply On-board POE supply
Dimensions	135 x 100 mm
Software	Linux - 5.10, Mainline Linux, OpenAIA (Yocto Kirkstone, Debos)

A Comprehensive Pre-trained AI Accelerator Platform

Accelerate Your Edge AI deployments with Secure, Scalable, Fast, and Fail-safe Edgeble Pre-trained AI Accelerator Platform.



Edgeble AI Technologies Pvt. Ltd
Plot No:106&107, Flat:202,
Doyens Township
Doyens Colony, Serilingampalle (M)
Hyderabad - 500019, TS - India.

www.edgeble.ai
info@edgeble.ai